

# Academic Software, Inc.

## 2016 Product Catalog



*Opening doors  
through  
research  
and  
assistive  
technology*

### CONTENTS

Single-Switch Access .....	2-5
Early Childhood Software.....	6-7
Professional Tools .....	8
Price List .....	9
Who We Are .....	10
Adaptive Device Locator System ....	11
Order Form.....	12



Visit Academic Software, Inc.  
on the World Wide Web at

[www.acsw.com](http://www.acsw.com)

Send e-mail to

[asistaff@acsw.com](mailto:asistaff@acsw.com)

*Spring/Summer  
Issue*

# WinSCAN

## Version 3.0 CS

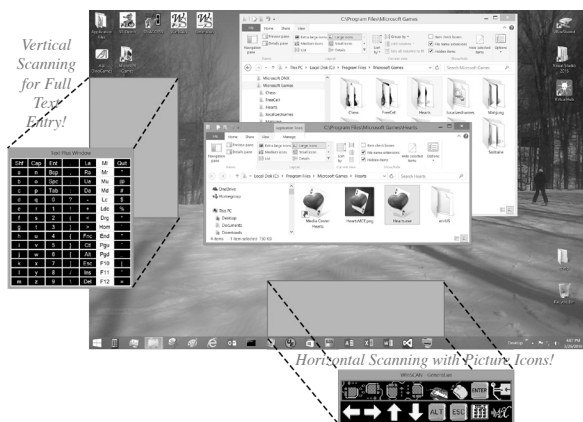
*The most versatile and powerful single-switch interface for PCs with Windows keeps getting better and better!*

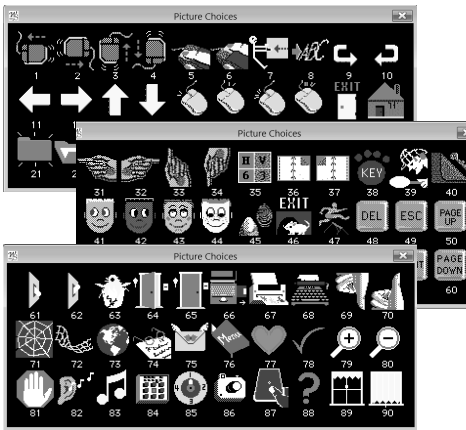
**WinSCAN 3.0 CS** is an advanced, multi-function, programmable, single-switch interface for Windows, offering independent control access to educational and productivity software, multimedia programs, and recreational activities for Windows 8 and 10 on compatible PCs.

**WinSCAN** creates scanning displays containing words or pictures representing functions you need to navigate Windows and operate particular programs. The display scans vertically, horizontally, or by row or column and can be repositioned on the PC desktop. You can create (or download) custom setups for particular programs, print them, save them on disk for re-use or further editing, link them together, or use them to start your PC automatically with **WinSCAN** up and running. You can open folders; select icons; run applications, games, and CDs; switch to new setups; point and click; cut and paste; drag and resize; use combination key commands; enter text; read e-books and email; ***even surf the Internet with WinSCAN and your single switch!***

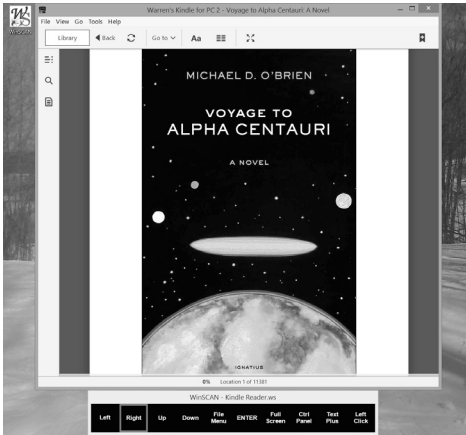
**WinSCAN 3.0 CS** retains the simplicity and ease of use of earlier versions, while offering a host of powerful features:

- 90 built-in icons to represent scan functions, now in 3 sizes (small, normal, and large)
- Up to 20 scan positions in the main scanning display
- User-defined # of rows and columns in the display (e.g., 1x10, 4x5, 7x2, etc.)
- Rapid and simplified **WinSCAN** custom setup design features.
- Choice of linear (horizontal or vertical), row/column, or column/row scanning
- Choice of audible tone modes (none, as scan progresses, or at each switch activation)
- A variable-length "dwell" or "activation delay" function gives the user time to attend the screen to see the consequences of input
- Two different DRAG modes to meet most normal dragging requirements
- Precision controls for mouse cursor positioning and dragging operations
- "Text Plus" and "Text Only" special functions provide extensive keyboard and mouse emulations when needed.
- A "Control Panel" special function allowing the single-switch user to adjust scan speed, drag mode, and many other settings independently
- A powerful capability to create and link associated setups for multiple programs and to switch between these setups swiftly and independently
- Plus many other small improvements that all **WinSCAN** users will appreciate

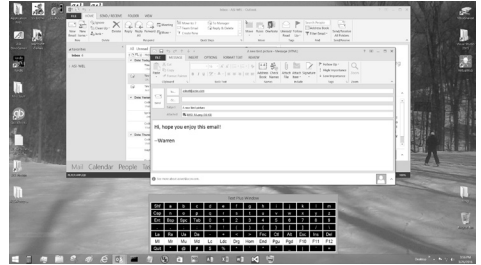




*Use words or picture icons to represent mouse and keyboard commands.*

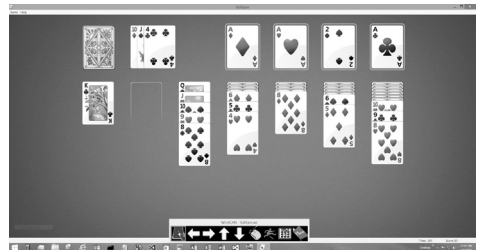


*Read Kindle™ e-Books with your single-switch!*



*Enter text, resize and drag, point and click, send email with your single-switch.*

*Using WinSCAN to play the Microsoft Solitaire™ game.*



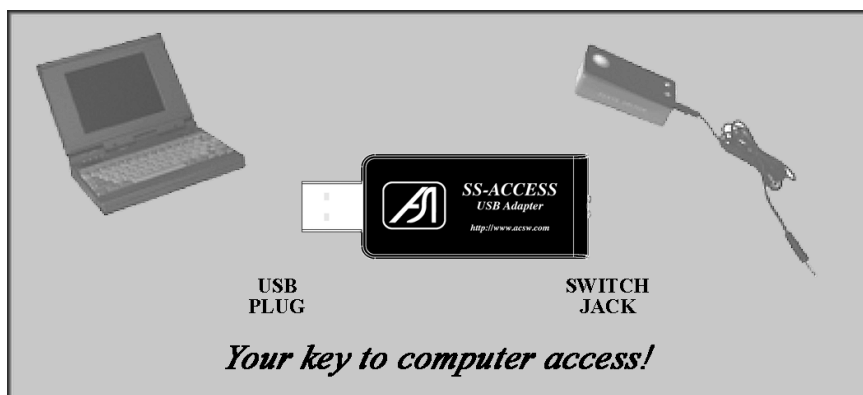
**WinSCAN** works with most external adaptive switches. It includes the software (on an 8gb flashdrive with plenty of extra room to carry movies, books, and files when you go out); a detailed User's Guide, the **SS-ACCESS USB Adapter** for your switch, and **SS-Demo**, a fun single-switch demonstration from ASI.....

**\$150<sup>00</sup>**



# SS-ACCESS for Windows

A simple solution from ASI for single-function, single-switch access for Windows 8 and 10 and compatible PCs.



**SS-ACCESS is as easy to use as ...**

- 1) Plug the **SS-ACCESS USB Adapter** into your PC's USB port;
- 2) Plug your switch into the adapter;
- 3) Install and/or run the **SS-ACCESS** software (from PC or flashdrive);
- 4) Run your single-switch application program.

**SS-ACCESS** is a single-function, single-switch interface solution for your PC and for Windows 8 and 10. Easy to install, simple to use, and compatible with the widest range of computers and application programs. You choose a keystroke, function key, combination key command, or mouse click to be sent to the single-switch application each time the user presses the switch. Adjust the repeat rate and dwell time (i.e., activation delay) to suit the user. **SS-ACCESS** is designed especially for new Windows operating systems and for programs from ASI, Edmark, Laureate Learning Systems, and other software publishers who provide built-in single-switch accessibility features and controls.

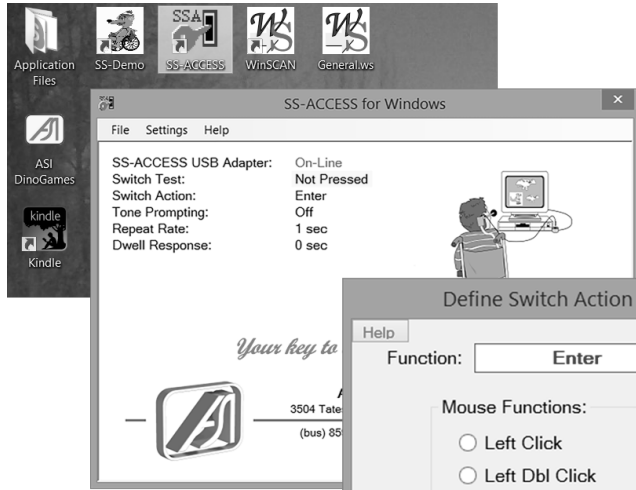
**SS-ACCESS for Windows** works with most external adaptive switches. It includes the software (on an 8gb flashdrive with plenty of extra room to carry movies, books, and files when you go out); an easy-to follow User's Guide, the **SS-ACCESS USB Adapter** for your switch, and **SS-Demo**, a fun single-switch demonstration from ASI .....

**\$70<sup>00</sup>**

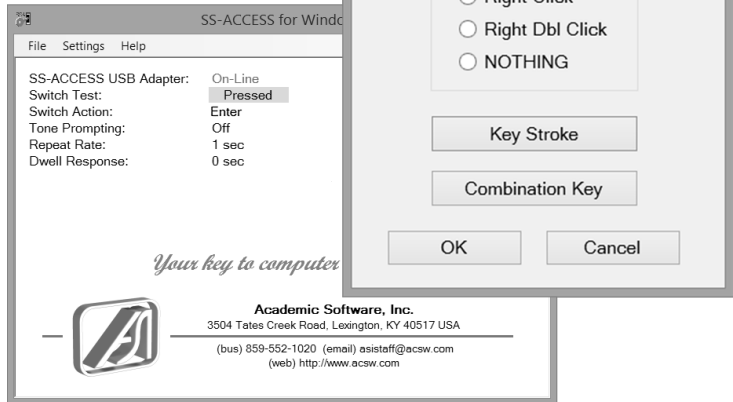


## To run SS-ACCESS:

- Click on the icon,



- Define the switch function,



- Test your switch,

- and choose FILE: RUN.

From then on your switch emulates the mouse or keyboard function you defined for all Windows application programs.

## You are invited to visit ASI on the Internet at <http://www.acsw.com>

For further product information, we encourage you to visit our company's web site on the Internet or to send e-mail to [asistaff@acsw.com](mailto:asistaff@acsw.com). Our site features a FREE DOWNLOAD PAGE where we provide a **WinSCAN Setup File Library** with custom setups for particular games, multimedia programs, CD-ROM's, and educational software. These are setups that we design or that **WinSCAN** users provide for us to share with others. If you have created a particularly good **WinSCAN** setup for a program you use, attach the file to an e-mail to us with a brief explanation and we will post it on the Web.

# DINO-GAMES

*On CD-ROM  
for Windows!*

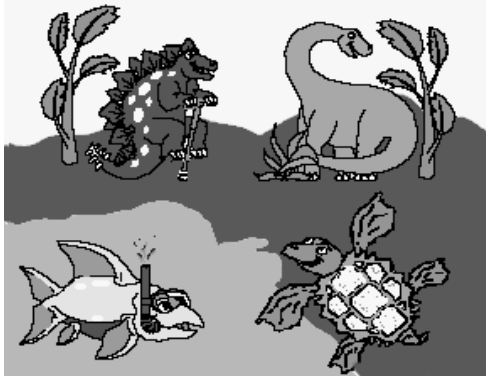
**\$20<sup>00</sup>** each

**\$60<sup>00</sup>** set of 4

**... are pre-reading/readiness activities for children 15 mo to 8 yrs old.**

***DINO-DOT** is a collection of dot-to-dot games. Connect the dots and colorful animated dinosaurs appear before your eyes. Number concepts, counting, sequencing skills, and spacial perception are involved in play. Choose games using patterns with three, six, nine, or twelve dots. Mode of play, difficulty level, auditory feedback, and scan speed can be controlled manually.*

***DINO-FIND** is a game of concentration that stimulates memory and pattern recognition and provides scanning practice. Dinosaurs are selected randomly and one to six matching pairs can be displayed. Switch users make selections using row/column or linear scanning methods.*



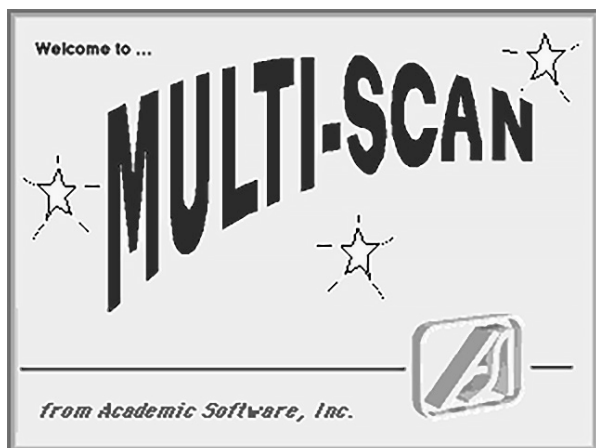
***DINO-MAZE** provides a series of colorful, motivating exercises where dinosaur characters move through mazes to reach goals with reinforcement through music and animation. Single-switch users can choose between cause*

*and effect activities or games that involve decisions about which direction the animated characters should take in order to reach the goal.*

***DINO-LIKE** is a matching game. Single-switch users select dinosaurs that are identical to the target dinosaur. The*

*discrimination level can be set manually, choosing a match and two distractors, a match and one distractor, or the match alone. Color, shape, and orientation of dinosaurs are used to enhance pattern matching skills.*

**Dino-GAMES** work great with **SS-ACCESS for Windows** from ASI and with alternate keyboards and other popular alternative input devices for the PC.



*On CD-ROM  
for Windows!*

**YOU CHOOSE  
THE GAMES,  
THE GRAPHICS,  
LEVELS, SCANS,  
AND MORE!**

*Multi-SCAN* is a pre-reading/readiness activity center featuring built-in single-switch control and all four of the great educational activities that have made *Dino-GAMES* so popular, all in one package and on one CD-ROM for PCs with Windows, including:

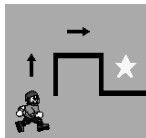
**Find**



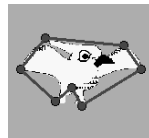
**Match**



**Maze**



**Dot-to-Dot**



In addition to *Dinosaurs*, *Multi-SCAN* adds 5 more graphic libraries appropriate for a wide range of age/ability including *Animals*, *Cosmetology*, *Independent Living*, *Sports*, and *Vocations*.

*Multi-SCAN* allows you to select a graphic library, choose games, set a schedule of play, adjust the difficulty level, and change other settings for each game independently. You can save the game setups under each user's name and print out individual performance reports after each play session. Meanwhile, the single-switch user can select games independently and play indefinitely.

*Multi-SCAN* for Windows works with the keyboard and mouse buttons and with most single-switch-control interfaces, including the *SS-ACCESS for Windows* USB switch interface from ASI, advertised elsewhere in this catalog.

*Some of the Multi-SCAN library graphics:*



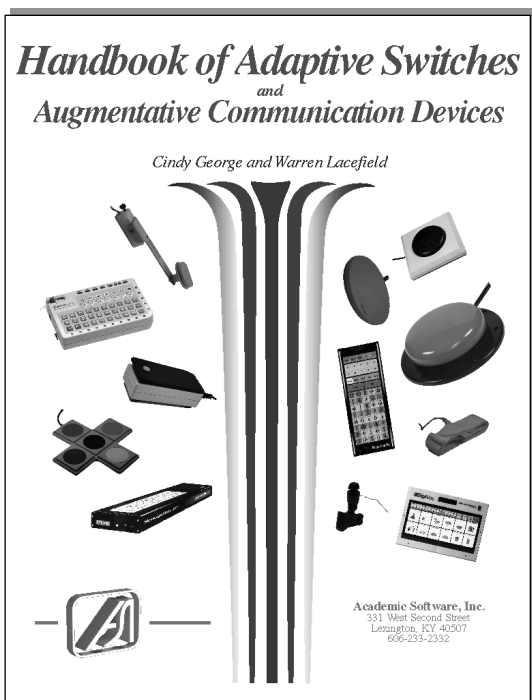
CD-ROM: **\$100<sup>00</sup>**

# THE HANDBOOK OF ADAPTIVE SWITCHES AND AUGMENTATIVE COMMUNICATION DEVICES, 3RD ED.

... over 300 pages of useful information you need ...

The **Handbook of Adaptive Switches and Augmentative Communication Devices, 3rd ed.**, is an essential sourcebook for assistive technology specialists, teachers, therapists, and others who select or help others select augmentative communication devices and adaptive switches for persons with disabilities.

The **Handbook** provides comprehensive practical and technical information pertinent to device selection for a wide variety of commercially available switches and aug-com devices. It contains physical descriptions; pictures; laboratory test data on switch activation and release pressures, travel distances, and compliance; and other functional information to help you choose the most appropriate pressure switch and augmentative device for a particular person.



The second and third editions add over 100 new pages containing data sheets for additional devices, more indexes, and new chapters and worksheets brimming with practical information on ergonomics and physical interaction, seating and positioning, control access, and other assessment and functional concerns. (Visit our web site to view sample pages.)

**\$30<sup>00</sup>**

***Order your  
copy now!***



**PROFESSIONAL TOOLS:**

Handbook of Adaptive Switches and AugCom Devices (3RD ED.) ... **\$30.00** ea

**SINGLE-SWITCH SOFTWARE:**

*Dino-MAZE, Dino-FIND* **\$60.00** set of all 4  
*Dino-LIKE, or Dino-DOT* (PC CD-ROM) ..... **\$20.00** ea

*Multi-SCAN* single-switch activity center (PC CD-ROM) ..... **\$100.00** ea

**SINGLE-SWITCH INTERFACES:**

*SS-ACCESS* for Windows (single-function) ..... **\$70.00** pkg

*WinSCAN 3.0 CS* (programmable, multi-function) ..... **\$150.00** pkg

**Purchasing Information** ..... on the web at <http://www.acsw.com>  
 by phone: 859-552-1020  
 by mail: Academic Software, Inc.  
 3504 Tates Creek Road  
 Lexington, KY 40517

**Accepted Forms of Payment** ..... Business and Personal Checks  
 MasterCard or VISA  
 Institutional Purchase Orders (prepayment requested)  
 ASI offers NET-15 day terms for orders that are billed.

**Return Policy** ..... If merchandise does not meet the needs of the intended user or arrives in unsatisfactory condition, it may be returned in its original condition and packaging for full refund, less shipping and handling, within 30 days of the date of purchase.

**Shipping & Handling** ... Add \$6.00 s/h for each copy of each item ordered. For international orders, please add \$18.00 per item. (Additional shipping costs for some destinations.)

Copyright © 2016                      ASI                      All Rights Reserved

## ASI INFORMATION RELEASE ..... (3/28/2016)

Academic Software, Inc., (ASI) is a small Kentucky-based educational research, development, and consulting firm completing its 33rd year as a corporation headquartered in Lexington. ASI specializes in the field of assistive technology and computer access for children and adults with disabilities and for health professionals who work with people with disabilities. The company employs a permanent staff of three professionals (educational psychologists, assistive technology specialists, programmers, graphic artists, and others) as well as a part-time and temporary staff of several consultants, subcontractors, and other resource personnel. The company has been successful in the Small Business Innovative Research (SBIR) program and has received Phase I and II support from NIDDR, NIH, NSF, and the US Department of Education.

ASI designs and distributes custom software and hardware products for the educational research and assistive technology communities. ASI pioneered the development of software to automate the production of picture overlays for membrane keyboards and augmentative communications boards, producing the *Unicorn Overlay Express* for Unicorn Engineering (now Intellitools, Inc.) and an Apple version of the *Picture Communication Symbols* for the Mayer-Johnson Company. Now, however, the company is best known for its *Adaptive Device Locator System* and products for single switch access for PC computer users.

These include the new versions of *SS-ACCESS for Windows*, a single-function, single-switch, USB interface and *WinSCAN 3.0 CS*, a powerful multi-function switch interface package, both for PCs with Windows 8 and 10. With *WinSCAN*, a person can turn on the computer and immediately access all the features of Windows; manage and navigate the desktop; run applications and CDs; even surf the Internet; using only a single-switch.

Past accomplishments include an adapted curriculum project supported by NSF entitled *Single Switch Access to Science Software* (and to scientific web sites). This project demonstrated clearly that with *WinSCAN* and appropriate setup files, children who use single-switches can access the same math and science education software and perform the same scientific computer-based activities as do other children in the classroom who use the keyboard and mouse. This research and two other funded projects (*Beyond Cause and Effect*, NIH, and *MultiSCAN 2000*, DepEdu) demonstrated a variety of supplemental materials for science and math education that teachers can use to help insure the accessibility of the curriculum.

In addition to its interface products, ASI produces the popular *Dino-GAME* series of single-switch scanning games for young children and the *Multi-SCAN* single-switch activity center program for classroom and home use. The company also publishes the Handbook of Adaptive Switches and Augmentative Communication Devices which contains physical descriptions, lab tests, and functional data for a wide variety of commercially available pressure switches and augcom devices. Chapters and worksheets cover physical interaction, seating and positioning, and control access issues. The Handbook has become an essential reference tool for assistive technology professionals, therapists, and others who make decisions concerning physical access.

In addition to in-house R&D activities, the company provides services in areas of research design, statistics, and educational and assistive technology and collaborates with other university and private groups to promote the development of innovative products for persons with special needs. ASI was a charter vendor member of the Alliance for Technology Access and the Assistive Technology Industry Association (ATIA) and a regular exhibitor at major assistive technology conferences throughout the country. The company can be reached by phone at 859-552-1020 or by e-mail at [asistaff@acsw.com](mailto:asistaff@acsw.com).

**AW INFORMATION RELEASE ..... (3/28/2016)**

AdaptWorld.com, Inc., (AW) a free assistive technology (AT) buyer's guide and product information resource on the Internet, and Academic Software, Inc., (ASI) an educational R&D and assistive technology firm in Lexington, KY, announce the availability of the ***Adaptive Device Locator System on the Web***, supported by NIDRR and the US Department of Education under Phase II of the Small Business Innovative Research (SBIR) Program. Visit the AW web site at <http://www.adaptworld.com> and search all seven ADLS databases (*Existence, Communication, In-Situ Motion, Travel, Environmental Adaptation, Rehabilitation and Sports and Recreation*) for the information you need about 1000's of products from 100's of companies designed to make life better.

**Overview:** ***ADLS-on-the-Web*** guides users through a simple search process that results in lists of devices designed to meet specific functional needs. It provides short device descriptions, pictures of equipment, and lists of sources for products and product information. In addition, ***ADLS-on-the-Web*** provides links to vendor sites and will generate email or printed letters automatically to companies requesting catalogs and specific product information about an identified device.

***ADLS-on-the-Web*** is remarkably easy to use. But its most important feature is that ADLS responds directly to the functional needs of people. First you identify the goal or objective to be performed by an individual. Then you are presented with a series of options that more sharply define that goal and require decisions about the individual's characteristics and abilities. These decisions eventually lead to a related cluster of devices, aids, and/or accessories designed to help the person accomplish specific activities. You do not need to know the names of devices or vendors to use this system. The unique organization of the ADLS databases follow principles of human development and are the result of nearly 25 years of prior research and development activities. This makes your search process a very personal and individualized one, directed by a conception of the goal or function to be performed and the capabilities of the person considering the use of assistive technology.

**Content Areas:** ADLS covers the full spectrum of technologies, equipment, and accessories that can improve independence and enhance functioning:

***EXISTENCE*** items provide assistance in basic functions needed to sustain life. Included are devices that help with feeding, elimination, bathing, dressing, grooming, and sleeping.

***COMMUNICATION*** devices facilitate the reception, internalization, and expression of information. Included are hearing amplifiers, magnifiers, telephone dialers, learning aids, writing and drawing aids, pointers, dedicated speech aids, alternative input and output devices for computers, switches, and many other kinds of electronic and non-electronic equipment.

***IN-SITU MOTION*** items provide stabilization, body support, or protection to a portion of the body that requires it, e.g., special positioning devices and furniture, support harnesses, stabilizers, slings, and body protectors.

***TRAVEL*** equipment can help a person to move about horizontally or vertically, e.g., hoists, wheelchairs, scooters, cycles, ambulators, walkers, crutches, and canes.

***ENVIRONMENTAL ADAPTATION*** items assist a person perform many of the activities involved in transition from school to work and daily living, both indoors and outdoors. Driving aids are included in this category, as well as special fixtures, kitchen utensils, and appliances.

***REHABILITATION*** is normally determined and supervised by a physical or occupational therapist in consultation with medical staff to improve and increase a person's physical function or range of motion. The Locator describes devices used for testing, exercising, training, and therapy.

The ***SPORTS AND RECREATION*** database covers devices and aids designed to promote participation in individual and/or group sports, play, or hobby and craft activities.



Academic Software, Inc.  
3504 Tates Creek Road  
Lexington, KY 40517  
859-552-1020

## ORDER FORM



Product Description	Quantity	Price	Total
Shipping & handling ...	total # of items	\$6.00 s/h per item (\$18 international)	
	total amt. enclosed		

Date: \_\_\_\_\_

Name: \_\_\_\_\_

Organization: \_\_\_\_\_

Address: \_\_\_\_\_

City, State, Zip: \_\_\_\_\_

Phone: \_\_\_\_\_

*Enjoy our Year 2016  
Spring/Summer Catalog!*



REV 03/2016